



**INTEPLAST GROUP<sup>®</sup>**  
*Building Products*

# Inteplast<sup>®</sup> Garage Door Weatherstrip Installation Guide



[www.InteplastBuild.com](http://www.InteplastBuild.com)



Customer Service:  
800-521-4259

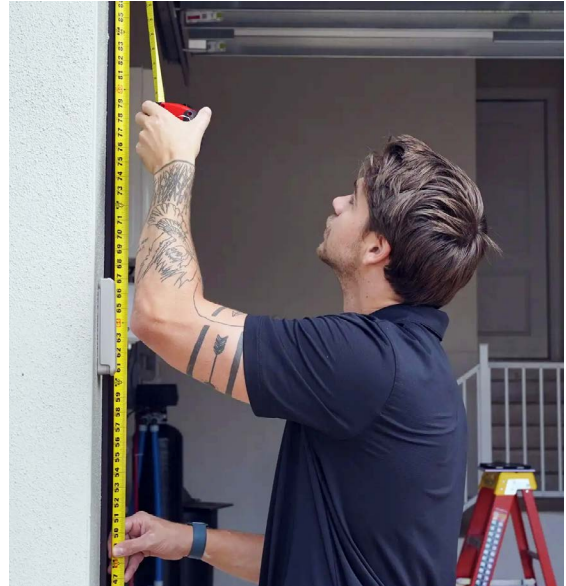
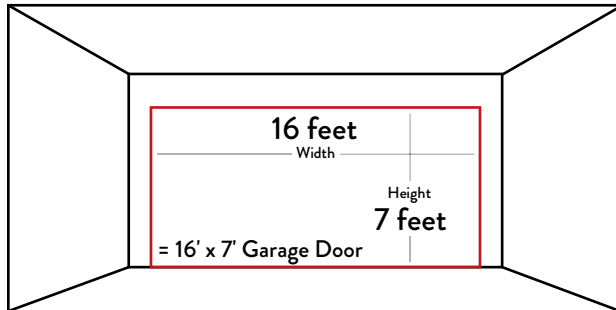
# Inteplast® Garage Door Weatherstrip Installation Guide

## Step 1: Measure the Opening

### Critical First Step:

Measure the door opening from top to bottom and side to side (both top and bottom measurements).

### Door Size Standards:



- **Residential Garage Doors:**  
Manufactured to exact opening dimensions
  - 16' x 7' door = exactly 16' x 7' opening
  - 9' x 7' door = exactly 9' x 7' opening
- **Commercial Doors:**  
Made 2" oversize in width to sit inside the opening

### Important:

If opening dimensions are incorrect, recommend making necessary repairs before proceeding with weatherstrip installation.

## Step 2: Clean the Opening

Ensure all surfaces are completely clean and ready for the new weatherstrip:

### Remove all:

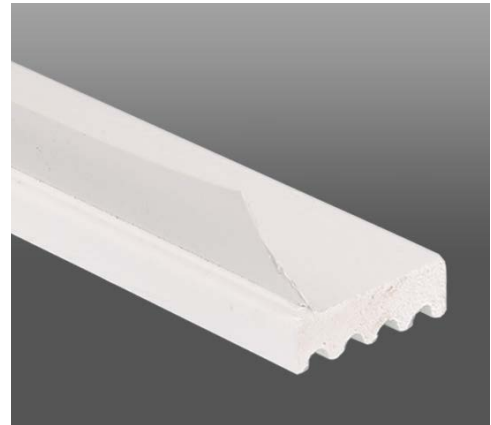
- Nails and screws
- Old Caulk
- Previous weatherstrip material
- Any debris or obstructions

### Tools:

Use standard woodworking tools. Use a miter box or miter saw with a finished blade.

## Step 3: Installation Process

Close the garage door completely before starting installation. Have all tools and materials ready.



### Installation Order:

#### 1. Install Header Piece First

- Measure from jamb to jamb
- Cut header piece to size using a hand saw or power miter saw with fine-tooth blade
- For headers longer than 8 feet, use a side jamb piece as a marking guide for better control

#### 2. Position the Header Weatherstrip

- Place weatherstrip against head jamb
- **Grooved side** against jamb
- **Smooth/wood-grained side** with flap against door
- Adjust flap contact: Look for **3/8" to 1/2" of flap contact** against the door
- **Critical:** The flap should glide smoothly on the door without binding or digging in

#### 3. Mark and Secure Header

- Mark weatherstrip placement with pencil at several locations
- Measure 1/4" to 1/2" back from front of jamb
- Connect lines across header as installation guide
- Fasten according to specifications below

#### 4. Install Side Piece

- Measure side pieces from top to bottom and cut
- Place side pieces flush to top piece
- Important: Side flap must overlap the top flap
- Trim side flap at 45° angle where it overlaps the top flap

## Step 4: Professional Corner Finishing

---

### 45° Corner Cuts - Why This Matters:

1. Superior Fit: Side pieces wedge tightly against header piece and won't move
2. Professional Appearance: Clean, finished look
3. Weather Performance: Better expansion/contraction performance in temperature extremes

### Fastening Specifications

#### Fastening Pattern:

- 1" from each end of every weatherstrip piece
- Every 8" through the middle of the weatherstrip body
- Why: Temperature extremes and increased UV exposure require secure fastening

#### Recommended Fasteners

- Primary Choice: 1.5" ring shank nails (604 8)
  - Head color-matched to weatherstrip
- Alternative: 6d or 8d galvanized nails
- For dark colors: Screws provide superior holding power (readily available in black)
- Pre-drilling is required at temperatures of 40°F or below to prevent cracking
- Inteplast Weatherstrip can also be installed with screws or construction-grade adhesive

#### Professional Tips:

- **Temperature Considerations:**  
Account for expansion and contraction in extreme weather
- **Quality Check:** Ensure flap contact is consistent but not binding
- **Tool Selection:** Use fine-tooth blades for clean cuts
- **Measurement Accuracy:** Double-check all measurements before cutting

#### Cleaning

- Always recommend hot water and mild soap
- Apply the hot water and mild soap, and immediately wipe dry for best results
- Never use a cleaner with chemicals

#### Painting

- No painting needed. Inteplast Weatherstrip is available in 15 standout colors.

# Inteplast<sup>®</sup> Recommended Storage & Handling Guide

# Inteplast® Recommended Storage and Handling Guide

---

## Shipping Specifications

### LTL Pallet Configuration

All LTL orders are shipped on pallets with the following configurations:

Long Length (14', 16', 18'):

- 24 boxes per pallet

Standard Lengths (7', 8', 9', 10', 12'):

- 36 boxes per pallet

Minimum 4 boxes. Same size, same color.



## Box Specifications

Dimensions: 3.25" x 8.5"

Quantity per box: 15 pieces

Shipping Orientation: Vertical

## Proper Storage Requirements

### Critical Storage Orientation

**ALWAYS** store vertically. Weatherstrip boxes are shipped and must be stored in vertical position.

**Why:** Prevents bending of the flaps, which can take a permanent set and affect installation quality.

### Storage Environment

Store in a cool, dry location:

- Protect boxes from moisture and water exposure
- Maintain consistent temperature
- Avoid direct sunlight and heat sources

## Handling Best Practices

### When Transferring to Racking:

**DO:** Provide solid support under every box

**DO:** Maintain vertical orientation

**DO:** Keep boxes on their narrow 3.25" side

**DO NOT:** Stack boxes on their narrow 3.25" side

**DO NOT:** Store boxes horizontally

**WARNING:** Improper stacking will bend flaps, causing permanent deformation.

## Ordering Guidelines

LTL freight charges are based on:

- Space occupied on the truck
- Weight of the shipment

**Full pallets optimize both factors**, reducing per-unit shipping costs.

### When Ordering

Please email your order information to [mouldingcustomerservice@intoplastbuild.com](mailto:mouldingcustomerservice@intoplastbuild.com) and CC your Sales Person

## Storage Checklist

### Cost-Effective Purchasing

Order in full pallet quantities whenever possible

Before accepting delivery:

- Verify pallet integrity
- Check for water damage
- Confirm box orientation is vertical

## Damage Prevention

**Common storage mistakes that damage product:**

- Storing boxes horizontally
- Stacking on narrow 8.5" wide
- Inadequate shelf support
- Exposure to moisture
- Temperature extremes
- Designated cool, dry prepared area
- Racking provides solid support for each box
- Confirm box orientation is vertical

**Result of improper storage:** Bent flaps with permanent set requiring product replacement.



Proper Storage  
Protect Your  
Investment and  
Ensures Quality  
Installation Results





## Contact

800-521-4259

[weatherstripcustomerservice@inteplastbuild.com](mailto:weatherstripcustomerservice@inteplastbuild.com)

[www.inteplastbuild.com](http://www.inteplastbuild.com)